

## PRINCESS 82MY

2016

2 890 000 EUR

130 engine hours

Italy, VAT not paid

Denis Khamzatov  
+7 921 886 07 92

### EXTERIOR VIEW



### MAIN CHARACTERISTICS

Lenght (inc. pullpit)	25,5 m
Beam	5,74 m
Draft	1.75 m
Displacement	50,7 tons
Hull color	white
Engine	Caterpillar C32 Acert
Number of engines	2
Power	2 x 1723 hp
Fuel capacity	6442 l
Fresh water capacity	1386 l
Maximum speed	34 kn
Cabins	4+2
Berths	8+3

**PRINCESS 82MY**

2016

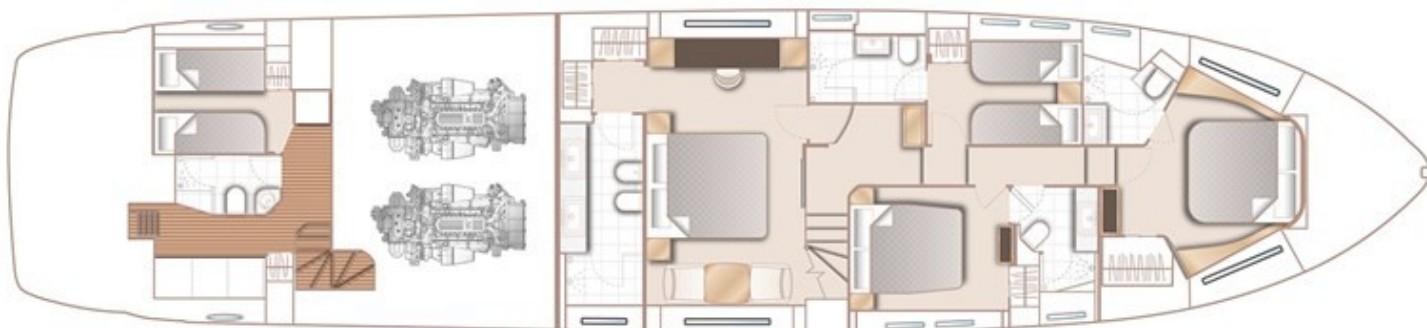
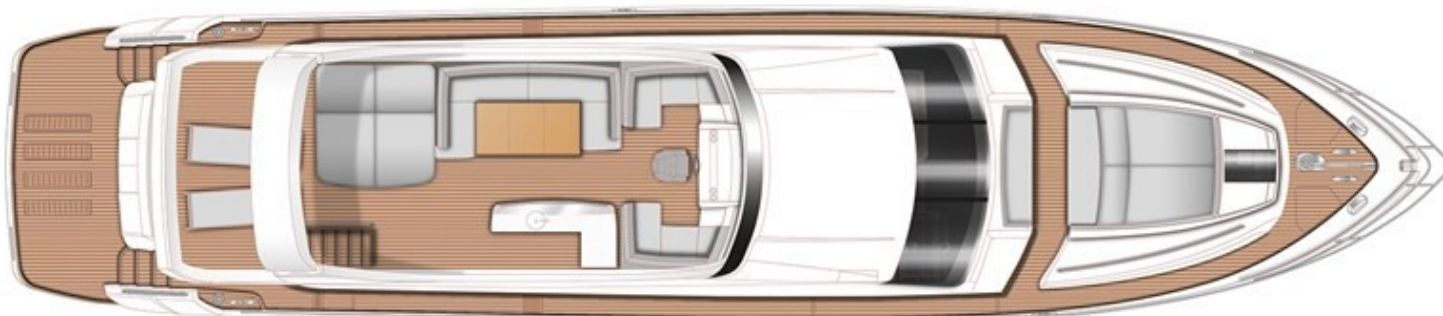
2 890 000 EUR

130 engine hours

Italy, VAT not paid

Denis Khamzatov  
+7 921 886 07 92

DECKS LAYOUT



## PRINCESS 82MY

2016

2 890 000 EUR

130 engine hours

Italy, VAT not paid

Denis Khamzatov  
+7 921 886 07 92

### OPTIONS

#### HYDRAULICS

- Hydraulic system consisting of separate engine driven hydraulic pumps on each engine with cross connections allowing any system to be supplied with hydraulic power from either engine, includes hydraulic windlass and variable speed 300 KgF Hydraulic bowthruster in place of standard (240 KgF)
- Hydraulic Sternthruster (variable speed 300 KgF)
- Bow and Stern thrusters feature fully proportional speed control. When the main engines are turned off the hydraulics are powered by an electric motor for which the standard generator is suitable.

#### STABILISATION

- TRAC Star 7.5X fin stabilizer system with inline Parker silencer (only available if 'hydraulic system' is also specified) This system is designed to provide roll control at speeds above 12 knots as well as zero speed stabilisation.

#### DECK HARDWARE

- Spa bath on flybridge (includes increased calorifier and water pump capacity)
- Stainless steel anchor in place of standard
- Side entry gates to aft port & starboard side decks (in addition to standard passerelle)
- Stainless steel boarding ladder supplied loose with deck mounting sockets fitted port and starboard sides (assists boarding side of boat from pontoon)
- Dinghy chocks on bathing platform

#### DECK EQUIPMENT

- Removable teak table on foredeck
- Engine driven bilge pump
- Shore hook up system to allow use of water in marina / port directly in place of using water tanks
- Fresh water connection in the windlass area

#### ELECTRICAL

- Continental 220v/240v sockets
- Additional refrigerator fitted below worktop in galley lobby (24v/240v, 150 litre)
- Icemaker fitted in flybridge wetbar (in addition to standard icemaker in saloon bar area)
- Freshwater maker (190 litres/hour) complete with remote instrumentation
- Underwater transom lights (4 LUMISHORE SMX95 Blue)
- Optional saloon table lamps 2 x Porta Romana GLB08 Coffee Bean Charcoal lamp with 18" Straight Oval Shade in Putty silk
- Optional Master Stateroom portside vanity unit table lamp 1 x Contardi Athena TA (Dark stained wood with black nickel plate & frame with shade in Cream Trevira (ribbed slate)

## PRINCESS 82MY

2016

2 890 000 EUR

130 engine hours

Italy, VAT not paid

Denis Khamzatov  
+7 921 886 07 92

### OPTIONS

#### GENERATOR / AIR-CONDITIONING

- Second 13.5 kW/50hz ONAN generator
- Air conditioning system of the crew area separated from the other part of the craft

#### AUDIO VISUAL & COMMUNICATIONS

- Forward Stateroom - Harman Kardon 2.1 Blu-ray (with Bluetooth connectivity) and KEF speakers
- Port Guest Cabin - 28" LED TV with a Fusion MS-AV700i Radio/DVD/MP3 player with Bluetooth facility
- Starboard Guest Cabin - 28" LED TV with a Fusion MS-AV700i Radio/DVD/MP3 player with Bluetooth facility
- Exterior upgrade - Flybridge also linked to the saloon audio system Cockpit - Waterproof speakers linked to the flybridge audio system, with separate local control (recommended if hard top fitted)
- Foredeck seating walk-through area - waterproof speakers linked to the flybridge audio system, with separate local control
- KVH (M7) Tracvision (linked to all television sets)
- Dummy KVH (M7) dome
- Satellite TV decoder (common interface) (Decoders in each cabin plus saloon for different channels required at the same time)

#### NAVIGATION

- Standard Navigation equipment incorporates: Raymarine e125 Radar/Chartplotter with GPS and with 3 x 12.1" brilliant colour multifunction displays (two at lower helm & one at upper helm) and with 4Kw SHD 48" digital colour open array scanner. Raymarine p70R autopilot with rate gyro and dual station controls and i70 colour multifunction instruments (for speed, distance, trip, depth, depth alarm, water temperature etc) with two i70's at lower helm and one at upper.
- Raymarine e165 (15.4") multifunction brilliant colour display with 2 screens at lower helm and 2 screens at upper helm (ie 4 screens in all) in place of standard 3 x 12.1" screens
- European version plotter
- International VHF

## **PRINCESS 82MY**

**2016**

**2 890 000 EUR**

130 engine hours

Italy, VAT not paid

Denis Khamzatov  
+7 921 886 07 92

### **OPTIONS**

#### **HULL COLOUR**

- White (with dark blue water line, dark blue antifouling & blue hull pinstripe, hull & bathing platform fendering is white with stainless steel insert)

#### **EXTERIOR UPHOLSTERY / CANVAS / COVERS**

- Bimini top (electro-hydraulically powered with overhead LED lighting and switched from flybridge console) - Charcoal Grey sunbrella canvas
- Foredeck sun awning
- Vogue Cloud Cockpit & flybridge upholstery including helm seats and sunbed
- Vogue Cloud Foredeck seating/sunbed

#### **INTERIOR FITTINGS AND FURNISHINGS**

- Alba Oak interior wood Satin finish (galley & wheelhouse floors are Alba Haze as standard)
- Random block flooring to main saloon and dining area in place of standard carpet
- Perso Avorio granite galley worktop
- Galley cabinet door to be in same timber as a rest of craft in place of standard white lacquer
- Platinum II Leather upholstery in saloon (band A)
- Separate sofa in saloon with corner tables in place of U shaped sofa
- Door handles fitted with Putty leather in place of standard
- Crew utility area fitted out as crew mess with seating area, table, sink, microwave oven, fridge/freezer and air-conditioning (not possible if Gyro stabilizers are specified)
- Wood floor in crew area
- Port Stateroom to have double berth conversion (inboard berth has electric slider to enable conversion to double)
- Electrical up/down bulkhead behind helm position
- Bidet in Master Stateroom bathroom
- Bianco Gioia marble bathroom floors and worksurfaces
- Siminetti Bianco Mosaic tiles to shower cubicles
- Mosaic tiles to Port & Starboard bathroom shower cubicle



## PRINCESS 82MY

2016

2 890 000 EUR

130 engine hours

Italy, VAT not paid

Denis Khamzatov  
+7 921 886 07 92

### GALLERY





**PRINCESS 82MY**

**2016**

**2 890 000 EUR**

**130 engine hours**

**Italy, VAT not paid**

**Denis Khamzatov**  
**+7 921 886 07 92**

**GALLERY**



**PRINCESS 82MY**

**2016**

**2 890 000 EUR**

**130 engine hours**

**Italy, VAT not paid**

**Denis Khamzatov**  
**+7 921 886 07 92**

**GALLERY**

